

MAIN DATA		CP317
Sales Unit Name		E3
Elevator system / Technical cluster		ES1 / 1.3.1
Elevator category		Person Elevator
Rated load [kg]	GQ	1125
Number of passengers	ZQG	14
Rated speed of car [m/s]	VKN	1.00
Travel height [m]	HQ	18.99
Roping	KZU	2
Number of stops	ZE	8
Number of LD front per elevator	ZEZ1	8
Number of LD rear per elevator	ZEZ2	0
Control type		Scalable Control
Control system		KA
Number of elevators in group	ZAG	1
Regulation code		EN 81-20:2020
Handicapped code		N
Building tolerance [mm]		-20/+20
Vandal resistance category		No vandalism
Fire code		No
Fire emergency service / Activation		BR1 / JBF+KBF
Seismic code / Seismic category		No
Car width x Car depth [mm]	BKxTK	1150x2100
Clear car width [mm]	BK_Clear	1150

DRIVE TRAIN			
Machine type		PMB135-B15-464	PMN [kW]
Traction sheave diameter [mm]	DD	87	7.80
Balancing of load [%]	KG	50	
Number of suspension media	ZZ	2	
Car Total length of 1 susp.media [m]		49	
Width of suspension media [mm]	BZ	40	
Inverter type	VF	VAF023_480	

CAR DATA		
Car type		CA PK 44
Car sling type		-
Car door type		DO SEC (Sematic 2000C-MOD)
Car guideshoes type		I10 2K
Car safety gear type		SA_GED_10
Weight of car [kg]	GK	747
Masses acting upon car safety gear [kg]	GKU	1876
Car weight during installation [kg]	GK_INEX	355

LANDING DOOR DATA		
Landing door type		DO SEC (Sematic 2000C-MOD)
Fire rating of landing door		EN 81-58 E120

COUNTERWEIGHT DATA		
CWT type		GG41-1002-106-B
CWT guideshoes type		I13
CWT safety gear type		Not ordered
Weight of CWT [kg]	GG_Theoric	1309
Masses acting upon CWT safety gear[kg]	GGU	-

MECHANICAL EQUIPMENT		
Compensating media type		-
Compensation tension device		Not ordered
Weight of one comp. media per m [kg]	GUM1	-
Car Ov. governor rope diameter [mm]		6
Car Ov. governor rope type		Seale 6x19S SFC 1770 B sZ
Car guide rail type		T75-3/B
Counterweight guide rail type		H75-1
Car buffer type		P+S type D2
CWT buffer type		P+S type D2
Car overspeed governor type		GBP201
Car Total length of Ov. Governor Rope [m]		48
Car tension device type		201CB
CWT overspeed governor type		Not ordered
CWT Total length of Ov. Gov. rope [m]	LCR	-
CWT tension device type		Not ordered

Subsystem of Unintended Car Movement Protection		
Detection Means	-	
Certificate number	-	
Stopping Means	Machine Brake 2X160 Nm	
Certificate number	NL19-400-1002-051-02	

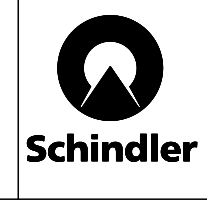
ELECTRICAL PARAMETERS		
Operating temperature range [°C]	T_Operation_Range	+5/+40
Humidity [%]	Humidity_Range_Electrical	max 60% at 40°C or 85% at 25°C
Altitude above sea level [m]	HAM	≤2000
Cable routing type when MMR/MR	MR_Cable_Routing	Not relevant
Number of starts per hour max.	ZKH_max	180
Main power supply acc. IEC 60364-1	Supply_Power_Net_Type	TN-S
Mains volt. supplied to bldg. by utility service [V]	UNS	400
Neutral wire	Neutral_Wire	Yes
Rated mains [V] / Mains voltage tolerance [%]	UN / UN_Tol_Range	400 / -15/+10
Mains voltage asymmetry range [%]	UN_Phase_Asymmetry_Range	-5/+5
Mains current during constant speed [A]	INN	14.72
Mains current during acceleration <sup>3)</sup> [A]	INA	16.37
Mains frequency [Hz] / Tolerance [%]	FN / FN_Tol_Range	50 / -5/+5
Main switch	JH_Variant	MCB_C16A
Max current of overcurrent prot. dev. building [A]	SIH_Size	Not relevant
Cable cross section at JH min / max [mm²]	ANN_JH_min/_max	1 / 25
Failure current maximum [mA]	I_Delta_N_max	300
Short circuit current rating max. [kA]	SCCR_max	6
Max total harmonic distortion mains current [%]	THDI_max	37
Surge protection voltage max [kV]	USP_Max	4.00
RCD fail. curr. switch on bldg. side mandatory <sup>1)</sup>	JFIH_Opt	No
Maximum regenerative power <sup>2)</sup> [W]	PNAG	4467
Mains line impedance max [mOhm]	ZFN_max	300
Power factor minimum	PS_Ratio_min	0.92
Mains distortion Cos Phi	Cos_Phi_JH	0.99
Mains apparent pow. const. speed / end accel. [VA]	SNN / SNA	10201 / 11341
Mains voltage lighting [V] / Tolerance [%]	UNL / UNL_Tol_Range	230 / -15/+10
Lighting current <sup>3)</sup> [A]	INL	10
Main switch lighting	JHL_Type	RCBO C10A 30mA Type A
Cable cross section at JHL min / max [mm²]	ANN_JHL_min/_max	1 / 16
Main switch lighting hoistway	SIBS_Type	RCBO C10A 30mA Type A
Hoistway lighting current [A]	I_SIBS	10.00
Cable cross section for SIBS min / max [mm²]	ANN_SIBS_min/_max	1.00 / 16.00
Automatic evacuation system (Attention: power!)	AES_Opt	Yes
Max. number of automatic evacuation trips in a row	Z_Evac	1

<sup>1)</sup> If RCD in front of JH is installed: use rated current >= INN, tripping current >= I\_Delta\_N\_max, Type B (all current sensitive) with a short time delay  
<sup>2)</sup> The building has to consume this recuperated energy by itself in case of emergency power supply of the mains power (NS21)  
<sup>3)</sup> The cross-section of the wiring feeding the elevator power shall be sized to limit the voltage drop at 3% of the nominal installation voltage

AKV= Car area  
BS= width shaft  
BT= width door  
BK= width car  
BKS= width car guide  
BGS= width cwt guide  
BG= width cwt  
COP= Car operation panel  
HT= height door  
HE= height floor  
HQ= height travel  
HS= height shaft  
HSG= height shaft pit  
HSK= height shaft headroom  
HF= Distances between guide rail fastening brackets  
HK= Car height  
HKC= Inside car height  
HKZ= Height car flooring  
HGP= Distance from counterweight to buffer  
HKP= Distance from buffer plate on car to buffer or plinth, with car at lowest terminal  
HP= Height of buffers, fully extended  
HPH= Rounded up total of buffer stroke and rubber stroke:  
HSS1= Height of plinth underneath car  
HSS2= Height of plinth underneath counterweight  
JH= Main switch  
JH1= Second main switch  
LDU= Control cabinet (LDU)  
LFGK= Length of cwt rail end from top floor  
LFKK= Length of car rail end from top floor  
LOP= Landing operation panel  
SG= guide cwt bracket  
SF= guide car bracket  
SKU= lift overtravel (bottom)  
SKO= lift overtravel (top)  
SKS= Jump distance of car  
TS= depth shaft  
TK= depth car  
TG= depth cwt  
TKF= Distance between edge of car sill and guide rail axis  
TSW= Distance from hoistway front wall to landing door sill  
TKSW= Distance from hoistway front wall to center line of car guides

Revision	Modification	Modified by	Reviewed by	Date
00	Automatic Generation with SAP data CP 317 (317)			

**General Information:** Product Line: **S3000+**  
Building: **VSO Trnovska 4, zamenjava**  
Address: - 1000 LJ  
Client: OFFER Slovenia - - Ljubljana



Further inquiries concerning this plan on		
Tel: ---		
Drawn	2022.08.02	Page
Released	2022.08.02	1/11
Comm. No.	<b>0302565463</b>	
Plan No.	<b>03025654630099.001</b>	

Ce document est notre propriété intellectuelle. Sans notre autorisation écrite, il ne peut être ni copié d'une manière quelconque, ni être utilisé pour la fabrication, ni non plus être communiqué à des tiers.

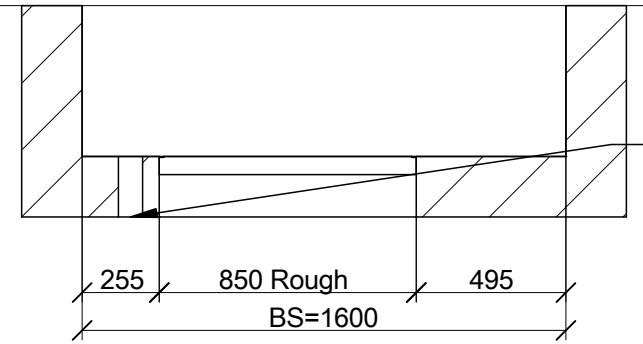
Diese Darstellung ist unser geistiges Eigentum. Sie darf ohne unsere schriftliche Zustimmung weder irgendwie kopiert noch zur Anfertigung des Werkes gebraucht oder Dritten personen bekanntgegeben werden.

This presentation is our intellectual property. Without our written consent, it shall neither be copied in any manner, nor used for manufacturing, nor communicate to third parties.

A3

# Door Detail 1:25

Entrance: 7 ( )



Electrical supply line: (local supply)  
 - 400 V Main power switch  
 - 230 V Hoistway lighting  
 Cable reserve 2 m min.  
 Empty duct with Ø 80 mm

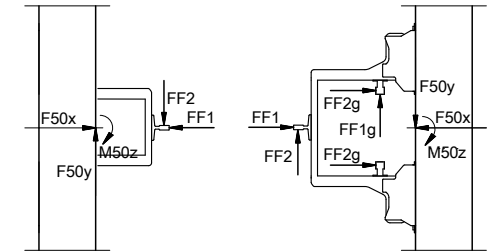
Hoistway loads

F9 = 36724 N	F50x_T = 1184 N ( )
F10 = 25727 N	F50y_T = 1409 N ( )
F11 = 40061 N	F50x_PH = 2071 N ( )
F12 = 23137 N	F50y_PH = 2452 N ( )
F13 = 13146 N	M50z_T = 321 Nm ( )
F14 = 9298 N	M50z_PH = 559 Nm ( )

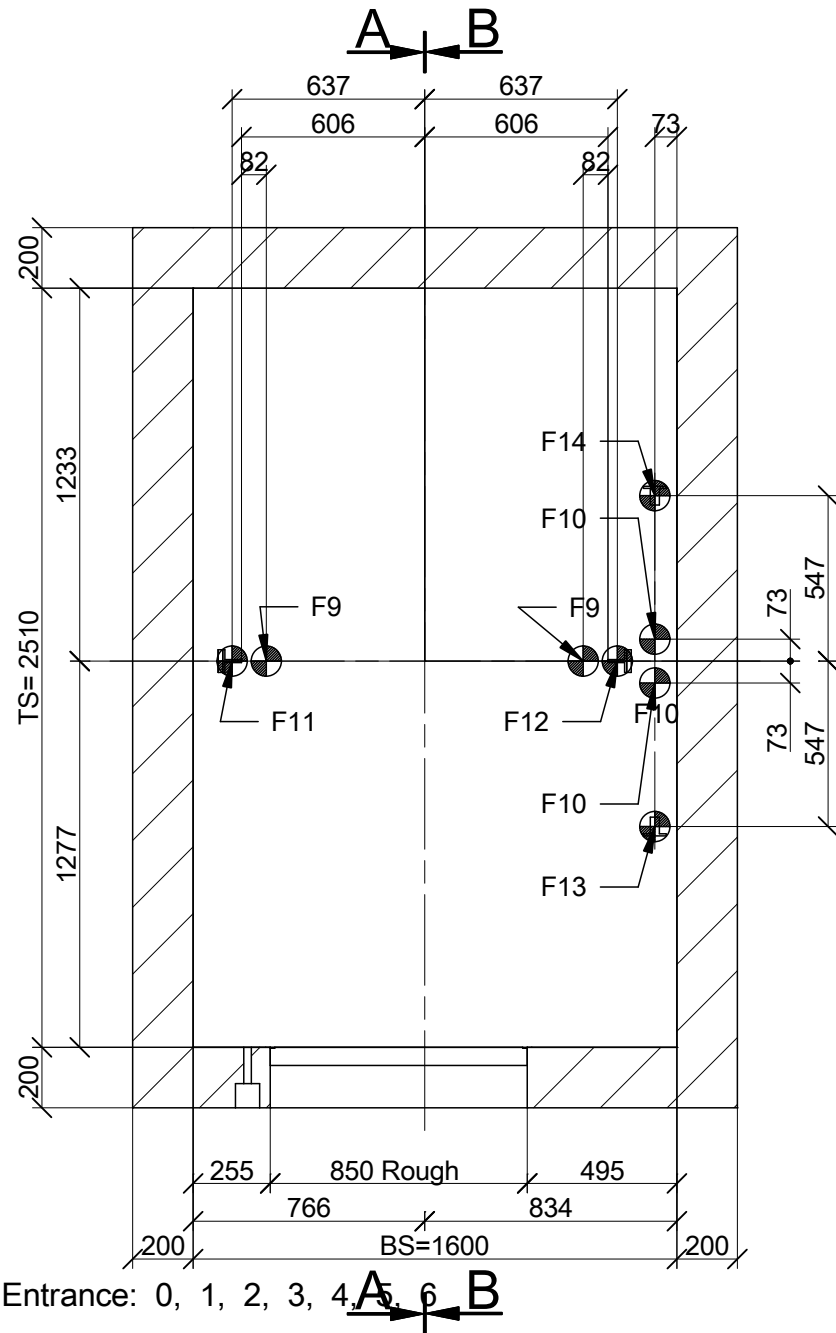
Load F11 & F12 only occur in case of operation of the safety gear.  
 Loads F9 & F10 in case either car or counterweight lands on the buffers.

Guide shoe forces (max. dynamic) [N]

Car  
 FF1 = 2071  
 FF2 = 2452  
 Counterweight:  
 FF1g = 595  
 FF2g = 669



# Well Pit 1:25



## Sound Insulation

Hoistway construction must comply with local standards for sound isolation

1m marks for final floor level must be provided at each landing for sill threshold adjacent to doorways to enable installation of the doorjambs

Revision	Modification	Modified by	Reviewed by	Date
00	Automatic Generation with SAP data CP 317 (317)			

Builder's work plan	Product Line:
<b>Plan views I</b>	<b>S3000+</b>
Building	<b>VSO Trnovska 4, zamenjava</b>
Address	- 1000 LJ
Client	OFFER Slovenia - - Ljubljana



**Schindler**

Contact:

Further inquiries concerning this plan on

Drawn	2022.08.02	Page
Released	2022.08.02	2/11

Comm. No. **0302565463**  
 Plan No. **03025654630099001**

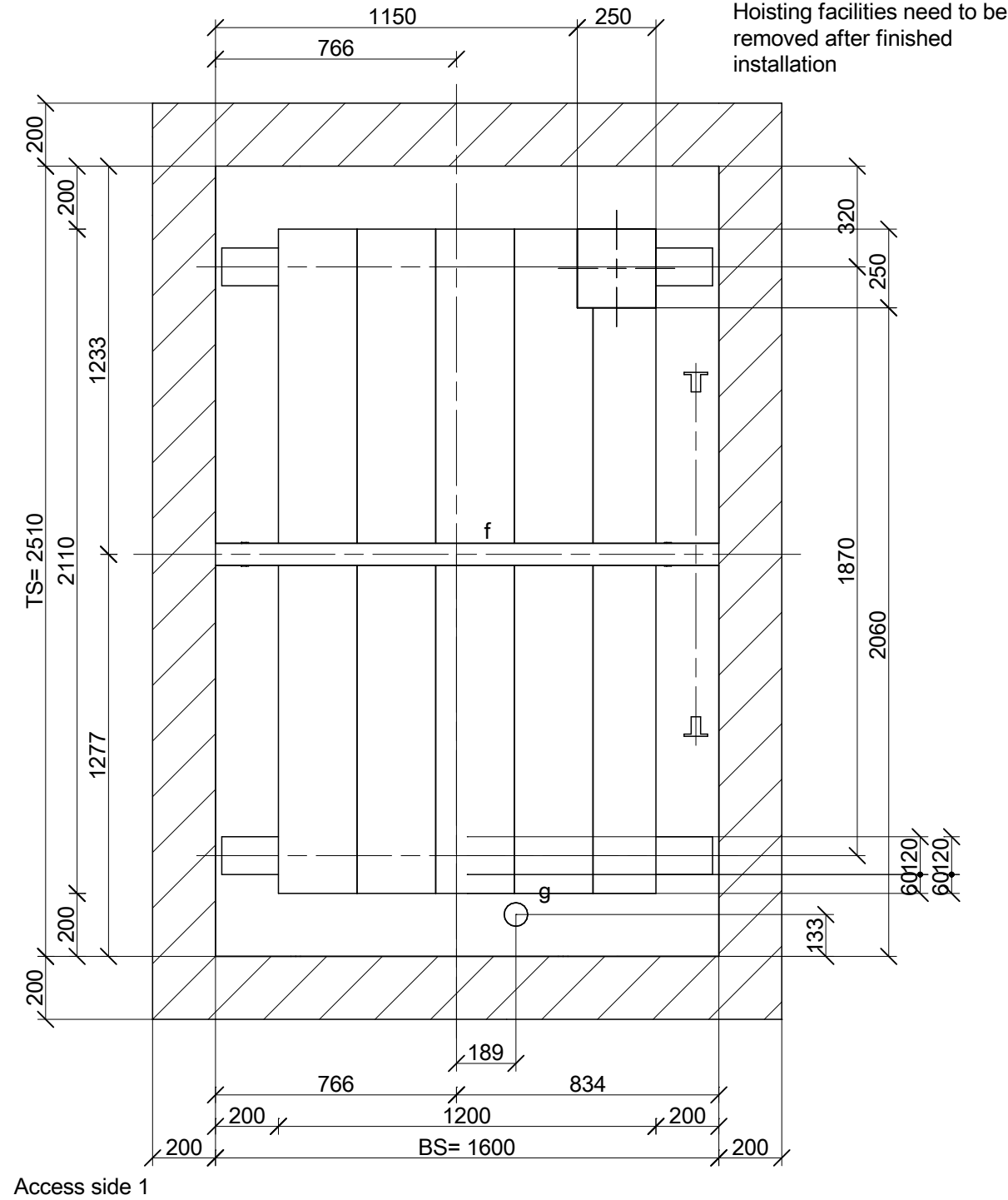
Cet ouvrage est notre propriété intellectuelle. Sans notre autorisation écrite, il ne peut être ni copié d'une manière quelconque, ni être utilisé pour la fabrication, ni non plus être communiqué à des tiers.

Diese Darstellung ist unser geistiges Eigentum. Sie darf ohne unsere schriftliche Zustimmung weder irgendwie kopiert noch zur Anfertigung des Werkes gebraucht oder Dritten personen bekanntgegeben werden.

This presentation is our intellectual property. Without our written consent, it shall neither be copied in any manner, nor used for manufacturing, nor communicate to third parties.

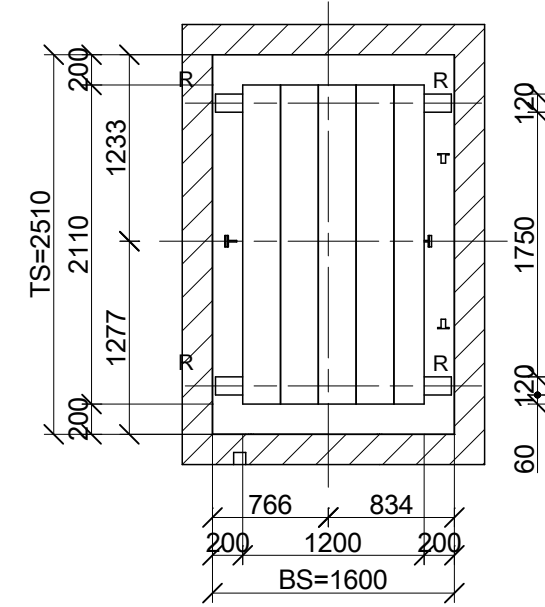


# Well Head 1:20



# Installation method 1:50

## Scaffoldless with hoisting devices



Cet ouvrage est notre propriété intellectuelle. Sans notre autorisation écrite, il ne peut être ni copié d'une manière quelconque, ni être utilisé pour la fabrication, ni non plus être communiqué à des tiers.

Diese Darstellung ist unser geistiges Eigentum. Sie darf ohne unsere schriftliche Zustimmung weder irgendwie kopiert noch zur Anfertigung des Werkes gebraucht oder Dritten personen bekanntgegeben werden.

This presentation is our intellectual property. Without our written consent, it shall neither be copied in any manner, nor used for manufacturing, nor communicate to third parties.

## Inlay Parts:

Description	Description Type	WLL	Quantity
Ceiling f	IPB	≥ 20 kN	1
Ceiling g	Load hooks	≥ 12 kN	1
-	-	-	-
Scaffolding Socket, R			8

Loads are not simultaneous.  
Structural elements (slab or supporting walls) to be dimensioned for [f] Working Load Limit or higher.  
The required minimum concrete quality must be Eurocode 2 EN1992 C20/25 or higher

Revision	Modification	Modified by	Reviewed by	Date
00	Automatic Generation with SAP data CP 317 (317)			

Builder's work plan  
**Plan views II**

Product Line:  
**S3000+**

Building  
Address  
Client

**VSO Trnovska 4, zamenjava**  
- 1000 LJ  
OFFER Slovenia - - Ljubljana



**Schindler**

Contact:

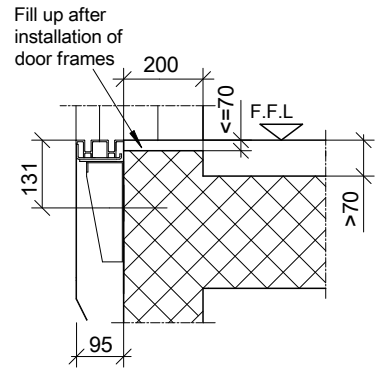
Further inquiries concerning this plan on		
Tel:		
Drawn	2022.08.02	Page
Released	2022.08.02	4/11
Comm. No.	<b>0302565463</b>	
Plan No.	<b>030256546300990203</b>	

Cet ouvrage est notre propriété intellectuelle. Sans notre autorisation écrite, il ne peut être ni copié d'une manière quelconque, ni être utilisé pour la fabrication, ni non plus être communiqué à des tiers.

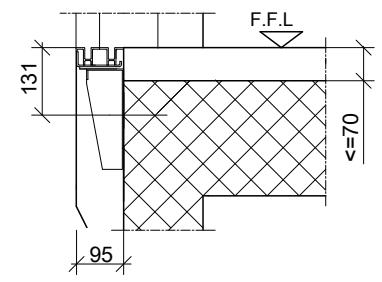
Diese Darstellung ist unser geistiges Eigentum. Sie darf ohne unsere schriftliche Zustimmung weder irgendwie kopiert noch zur Anfertigung des Werkes gebraucht oder Dritten personen bekanntgegeben werden.

This presentation is our intellectual property. Without our written consent, it shall neither be copied in any manner, nor used for manufacturing, nor communicate to third parties.

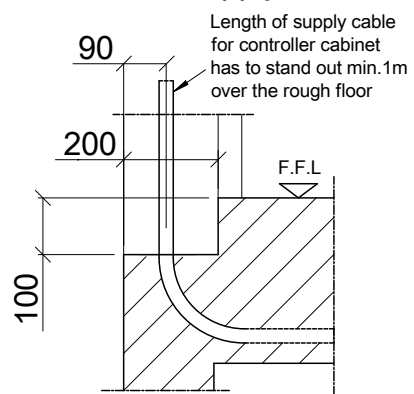
### Door Sill Detail >70



### Door Sill Detail

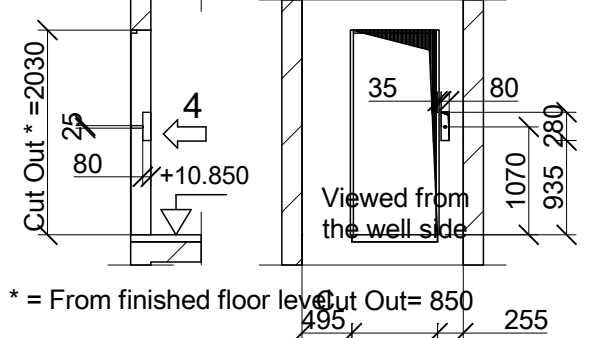


### Power Supply Cable



### Access side 1 1:75

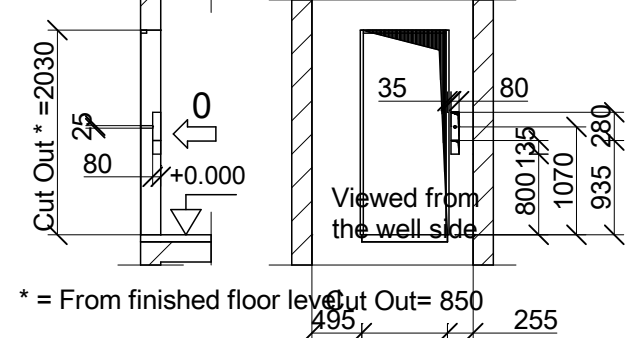
Entrance: All remaining floors



\* = From finished floor level Cut Out= 850

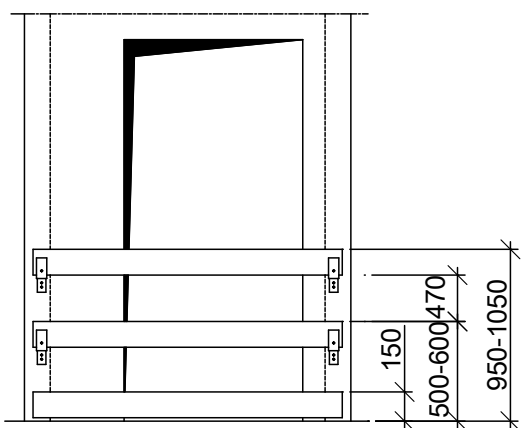
### Access side 1 1:75

Entrance: 0



\* = From finished floor level Cut Out= 850

### Closing door



Closing door  
(builders responsibility)  
The veneer plate has to be secured broad wise.  
The fence has to be easy to dismantle, and constructed and mounted according to the current regulations.

Revision	Modification	Modified by	Reviewed by	Date
00	Automatic Generation with SAP data CP 317 (317)			

Builder's work plan **Door cutouts** Product Line: **S3000+**

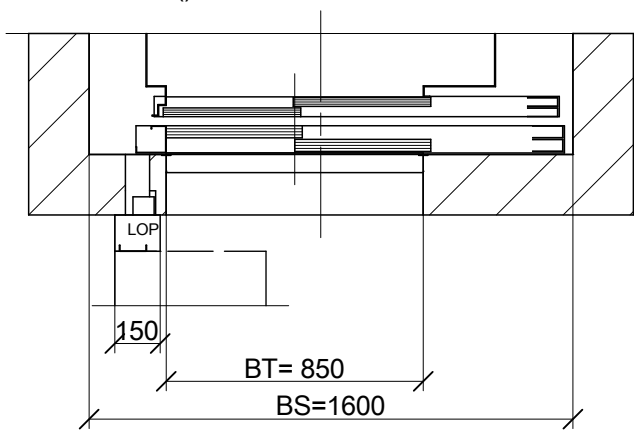
Building **VSO Trnovska 4, zamenjava**  
Address **- 1000 LJ**  
Client **OFFER Slovenia - - Ljubljana**

Contact:

Further inquiries concerning this plan on		
Tel:		
Drawn	2022.08.02	Page
Released	2022.08.02	5/11
Comm. No.	<b>0302565463</b>	
Plan No.	<b>030256546300990004</b>	

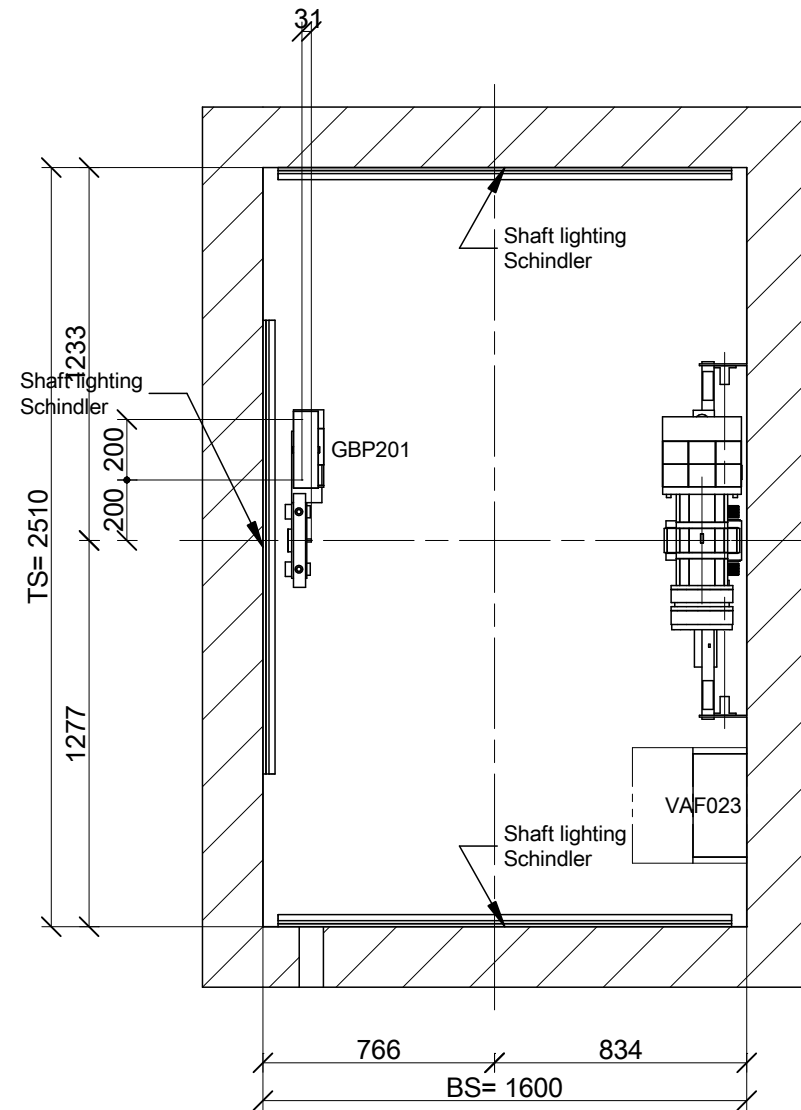
# Door Detail 1:25

Entrance: 7 ( )

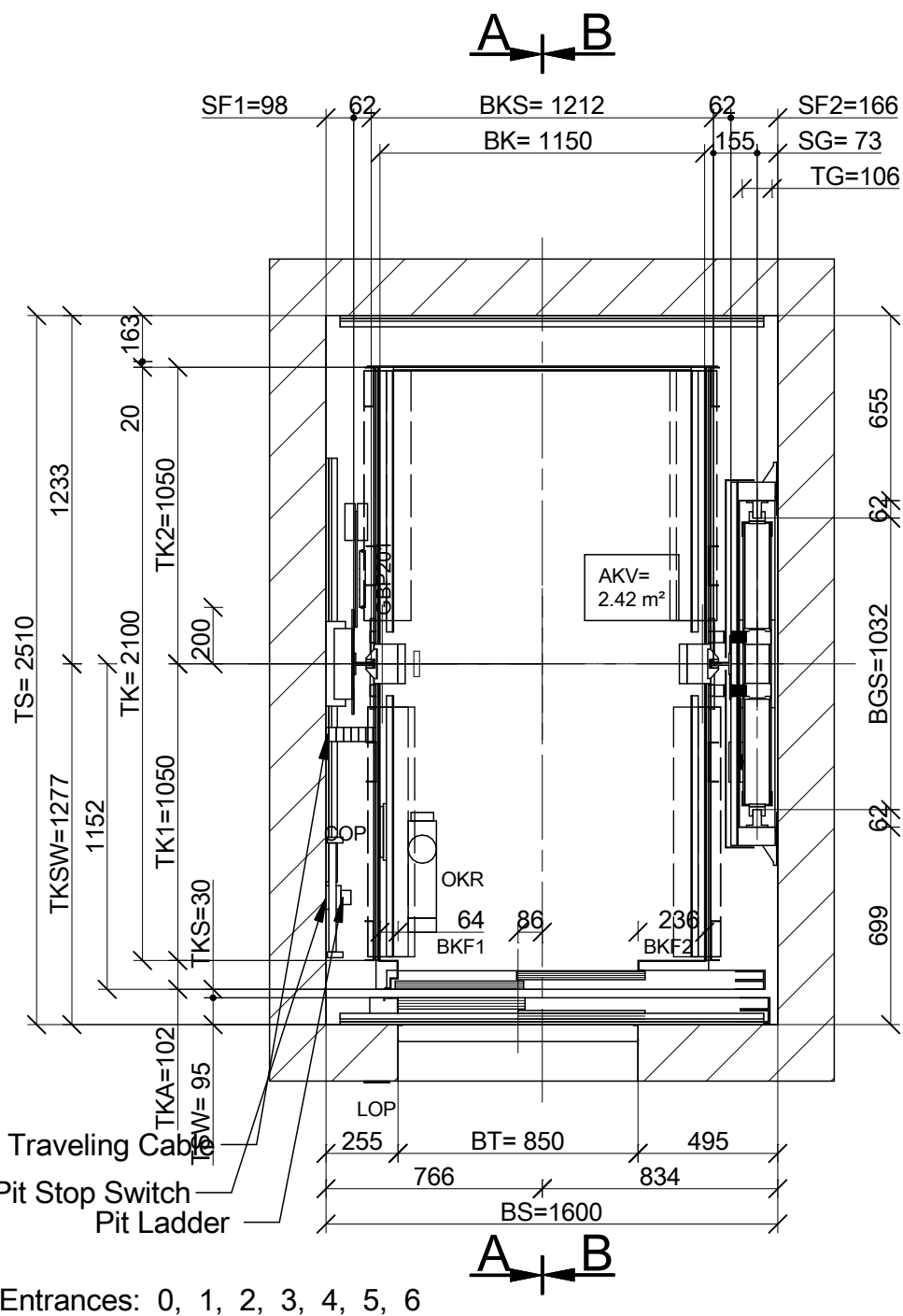


Acc code: Electric lighting (with switch) shall provide at least 200 lux at working areas.  
The internal lamp in the cabinet assures the required 200 lux at the working area in front of control box/LDU

# Well Head 1:25



# Well 1:25



Traveling Cable  
Pit Stop Switch  
Pit Ladder

Entrances: 0, 1, 2, 3, 4, 5, 6

Revision	Modification	Modified by	Reviewed by	Date
00	Automatic Generation with SAP data CP 317 (317)			

Installation Plan views Product Line: S3000+

Building Address Client: VSO Trnovska 4, zamenjava - 1000 LJ OFFER Slovenia - - Ljubljana



Further inquiries concerning this plan on Tel: ---

Drawn	2022.08.02	Page	6/11
Released	2022.08.02		

Comm. No. 0302565463  
Plan No. 030256546300990001

Cet ouvrage est notre propriété intellectuelle. Sans notre autorisation écrite, il ne peut être ni copié d'une manière quelconque, ni être utilisé pour la fabrication, ni non plus être communiqué à des tiers.

Diese Darstellung ist unser geistiges Eigentum. Sie darf ohne unsere schriftliche Zustimmung weder irgendwie kopiert noch zur Anfertigung des Werkes gebraucht oder Dritten personen bekanntgegeben werden.

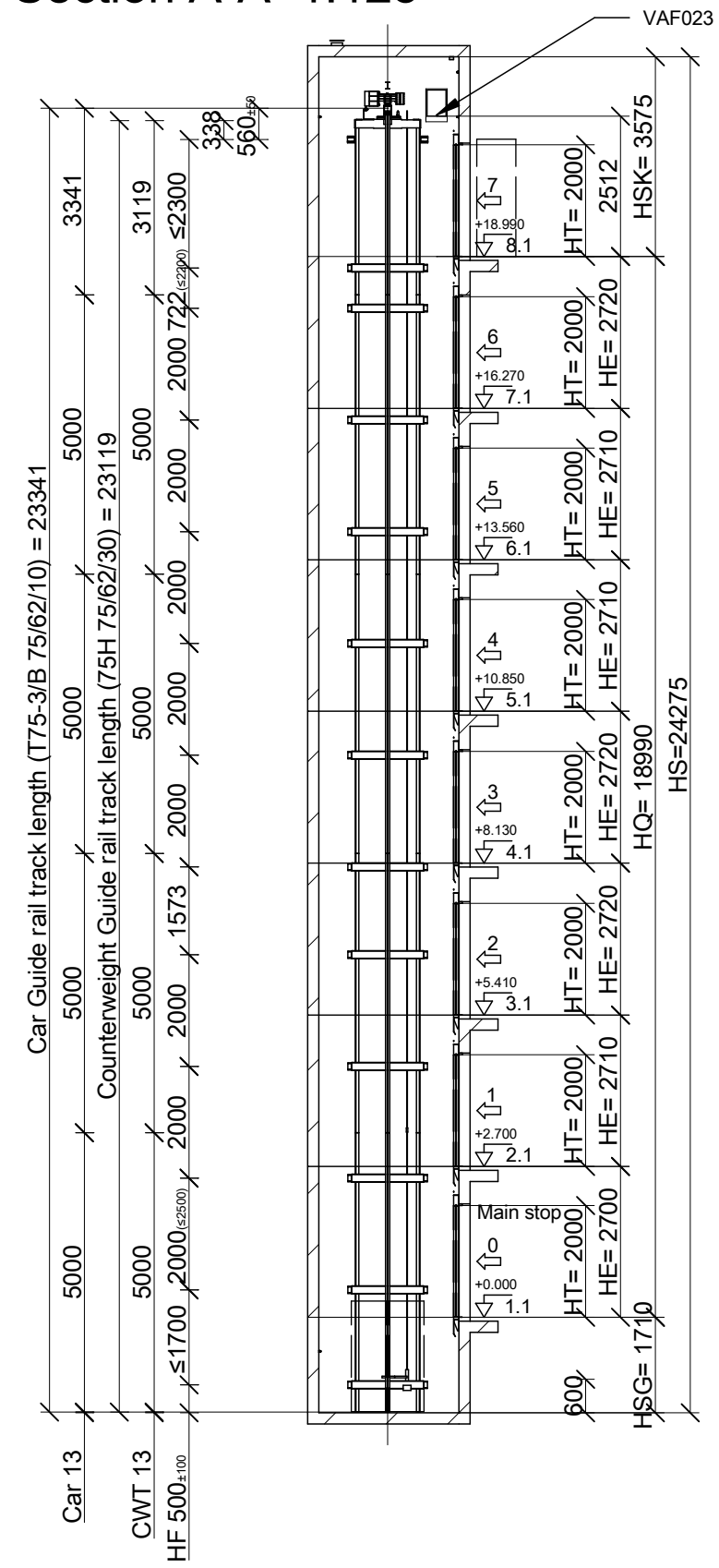
This presentation is our intellectual property. Without our written consent, it shall neither be copied in any manner, nor used for manufacturing, nor communicate to third parties.

Cet ouvrage est notre propriété intellectuelle. Sans notre autorisation écrite, il ne peut être ni copié d'une manière quelconque, ni être utilisé pour la fabrication, ni non plus être communiqué à des tiers.

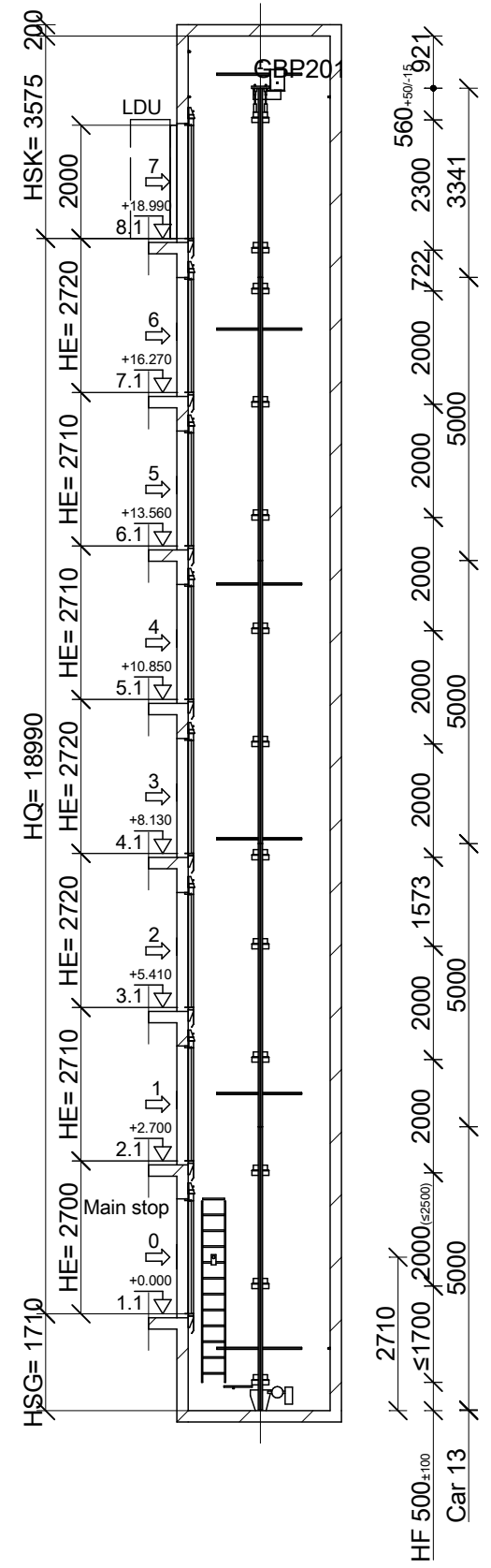
Diese Darstellung ist unser geistiges Eigentum. Sie darf ohne unsere schriftliche Zustimmung weder fälschlicherweise kopiert noch zur Anfertigung des Werkes gebraucht oder Dritten personen bekanntgegeben werden.

This presentation is our intellectual property. Without our written consent, it shall neither be copied in any manner, nor used for manufacturing, nor communicate to third parties.

### Section A-A 1:125



### Section B-B 1:125



### Bracket Selection

HFmax 2300 [mm]	Level [mm]	Car side	Counterweight side
Headroom section	to 22565	3 x Z-CL3	1 x L-A L 106 1 2 x O-B L 1002 106 1
	from 17814		
Travel section	to 17813	8 x Z-CL3	8 x O-B L 1002 106 1
	from 2139		
Pit section	to 2138	2 x Z-CL3	2 x O-B L 1002 106 1
	from -1710		

\*) Brackets are marked with a sticker if they differ from bracket type in travel section.

Revision	Modification	Modified by	Reviewed by	Date
00	Automatic Generation with SAP data CP 317 (317)			

Installation Elevation views Product Line: S3000+

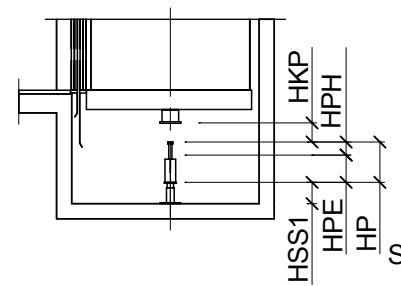
Building Address Client VSO Trnovska 4, zamenjava - 1000 LJ OFFER Slovenia - - Ljubljana

**Schindler** Contact: Further inquiries concerning this plan on Tel: 0302565463

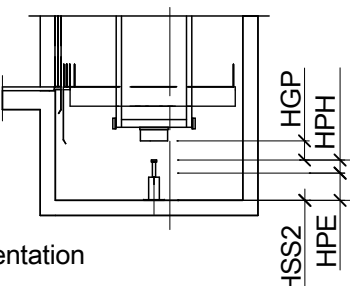
Drawn	2022.08.02	Page	7/11
Released	2022.08.02		

Plan No. 030256546300990002

Car position at bottom floor



Car position at top floor



Schematic presentation

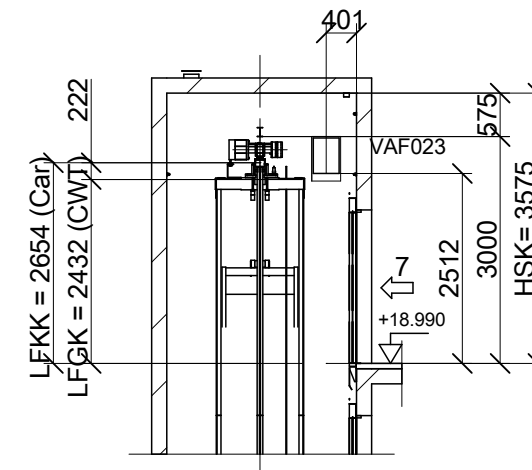
	Car buffer	Counterweight buffer
	PS_D2	PS_D2
(HP) [mm]	80	80
HPH/HPHL[mm]	72 / 72	72 / 72
HKP/HGP [mm]	70 -5/0	85 -20/0
HSS1/2 [mm]	983	167
HPE [mm]	8	8
Quantity	2	2

Refuge spaces

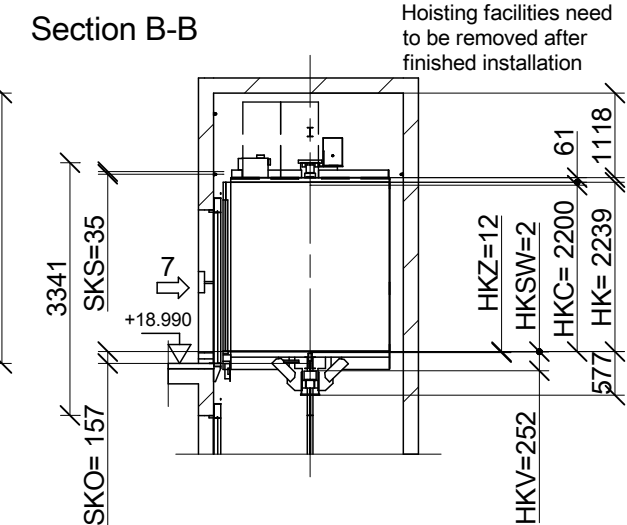
Position and dimension	Label
On car ceiling 700x500x1000 700x500x1000	Crouching
In hoistway pit 700x1000x500	Laying

## Wellhead and Wellpit 1:100

Section A-A



Section B-B

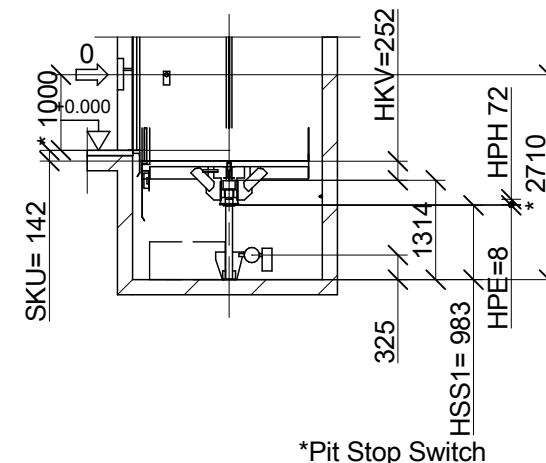
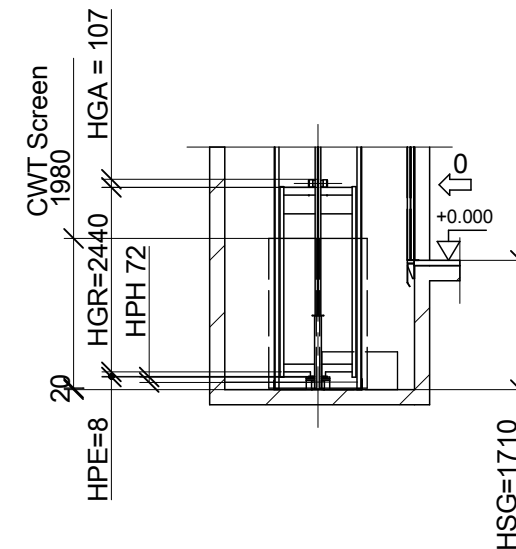
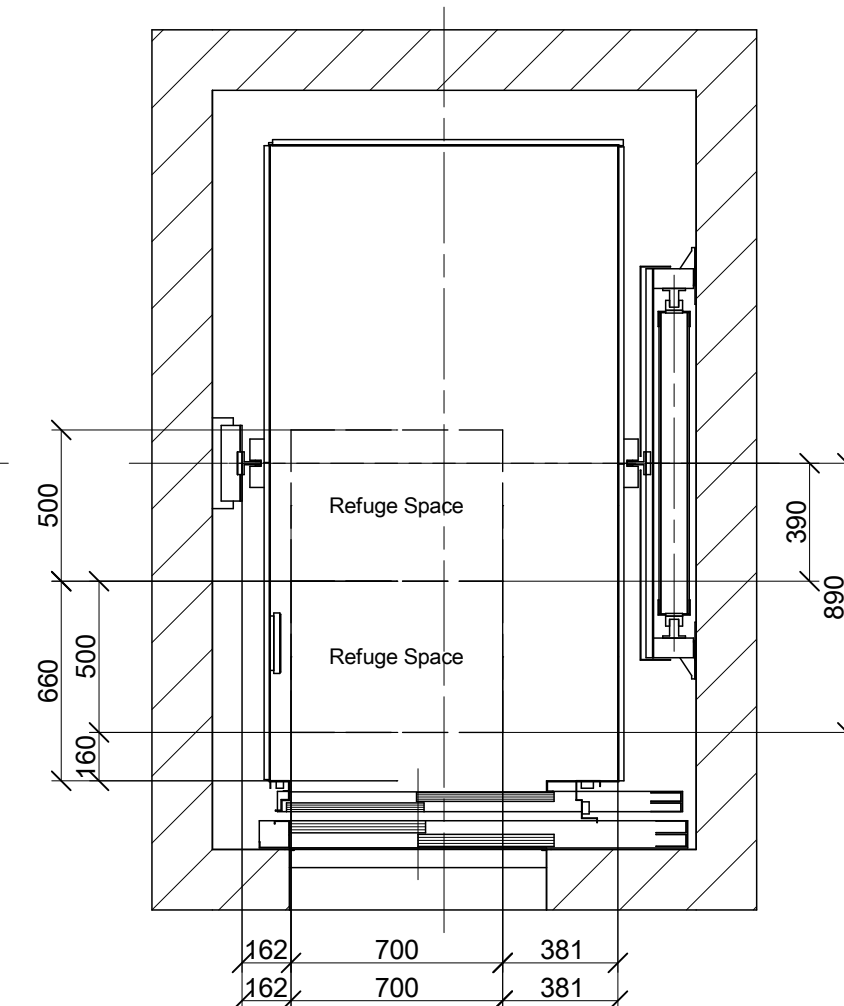
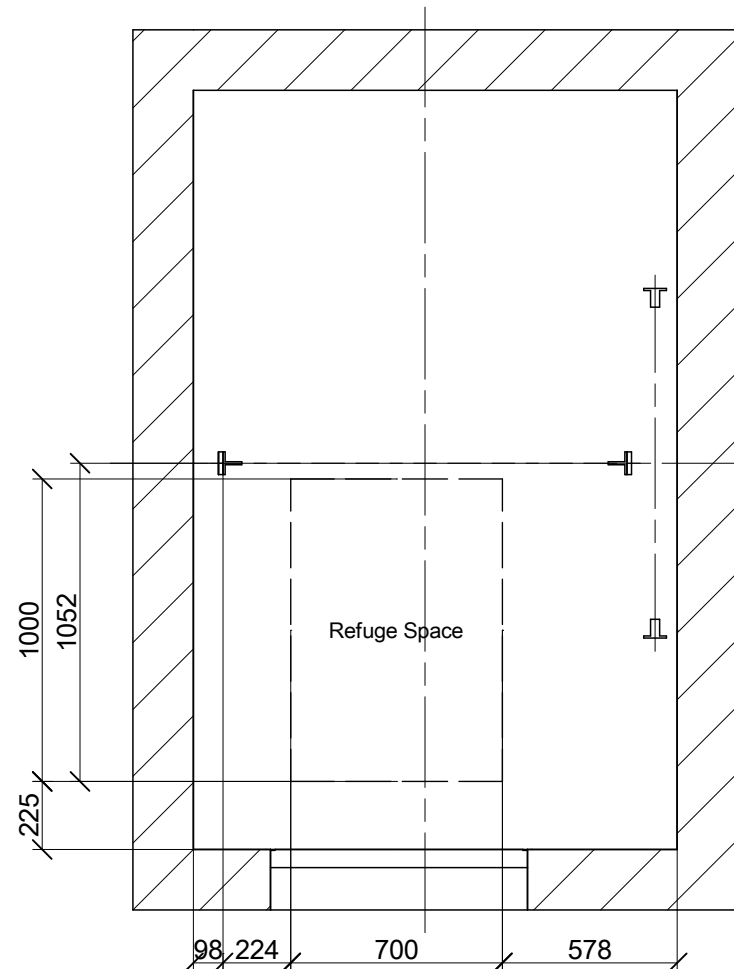


Hoisting facilities need to be removed after finished installation

## Overview of refuge space situation 1:25

In hoistway pit

On car ceiling



\*Pit Stop Switch

Revision	Modification	Modified by	Reviewed by	Date
00	Automatic Generation with SAP data CP 317 (317)			

### Overtravel distances and refuge spaces

Product Line:  
**S3000+**

Building Address Client  
**VSO Trnovska 4, zamenjava**  
- 1000 LJ  
OFFER Slovenia - - Ljubljana



**Schindler**

Contact:

Further inquiries concerning this plan on

Tel: 2022.08.02

2022.08.02

8/11

Comm. No. **0302565463**

Plan No. **030256546300990003**

Cet ouvrage est notre propriété intellectuelle. Sans notre autorisation écrite, il ne peut être ni copié d'une manière quelconque, ni être utilisé pour la fabrication, ni non plus être communiqué à des tiers.

Diese Darstellung ist unser geistiges Eigentum. Sie darf ohne unsere schriftliche Zustimmung weder irgendeine Kopie noch zur Anfertigung des Werkes gebraucht oder Dritten bekanntgegeben werden.

This presentation is our intellectual property. Without our written consent, it shall neither be copied in any manner, nor used for manufacturing, nor communicate to third parties.

1 2 3 4 5 6 7 8

A

A

B

B

E

E

F

F

A3

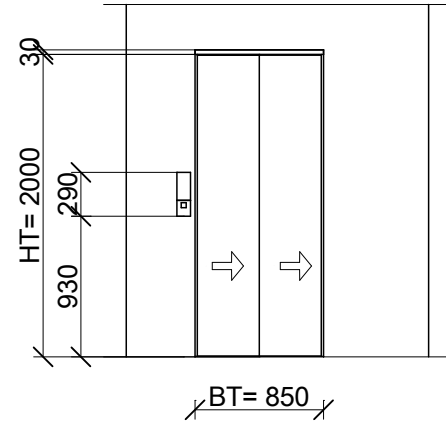
Cet ouvrage est notre propriété intellectuelle. Sans notre autorisation écrite, il ne peut être ni copié d'une manière quelconque, ni être utilisé pour la fabrication, ni non plus être communiqué à des tiers.

Diese Darstellung ist unser geistiges Eigentum. Sie darf ohne unsere schriftliche Zustimmung weder irgendwie kopiert noch zur Anfertigung des Werkes gebraucht oder Dritten personen bekanntgegeben werden.

This presentation is our intellectual property. Without our written consent, it shall neither be copied in any manner, nor used for manufacturing, nor communicate to third parties.

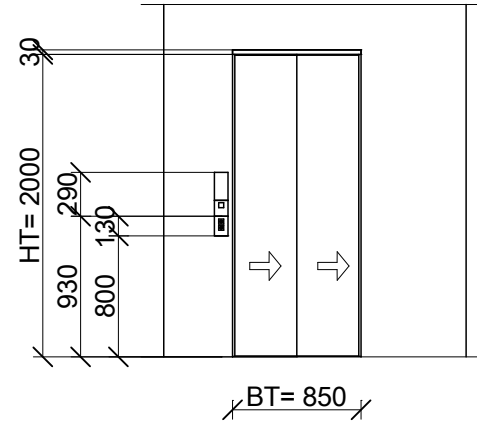
### Access side 1 1:50

Entrance: All remaining floors



### Access side 1 1:50

Entrance: 0 Main stop



Revision	Modification	Modified by	Reviewed by	Date
00	Automatic Generation with SAP data CP 317 (317)			

Installation **Landing door views** Product Line: **S3000+**

Building **VSO Trnovska 4, zamenjava**  
 Address - 1000 LJ  
 Client OFFER Slovenia - - Ljubljana

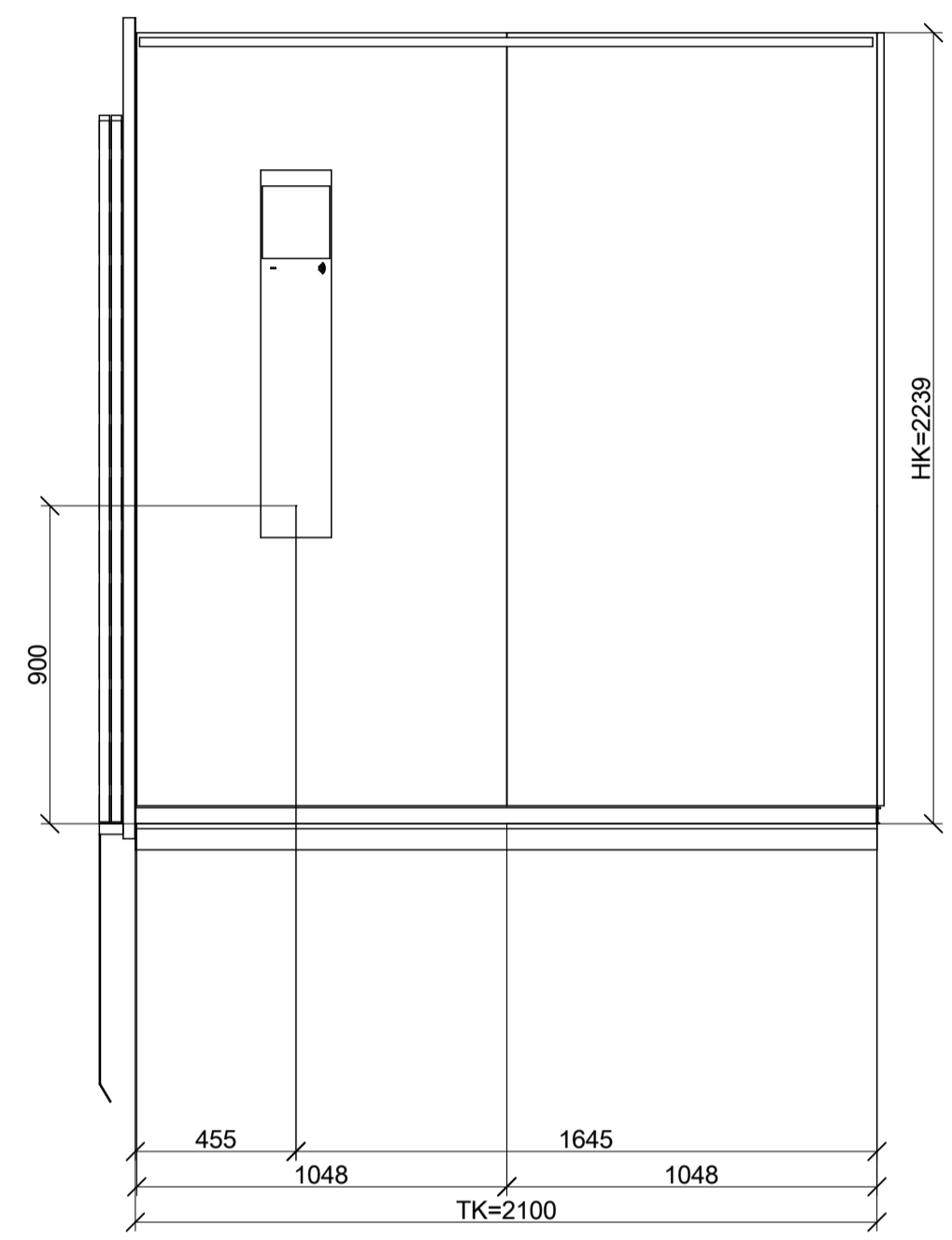
Contact: ---

Further inquiries concerning this plan on		
Tel: ---		
Drawn	2022.08.02	Page
Released	2022.08.02	9/11
Comm. No.	<b>0302565463</b>	
Plan No.	<b>030256546300990004</b>	

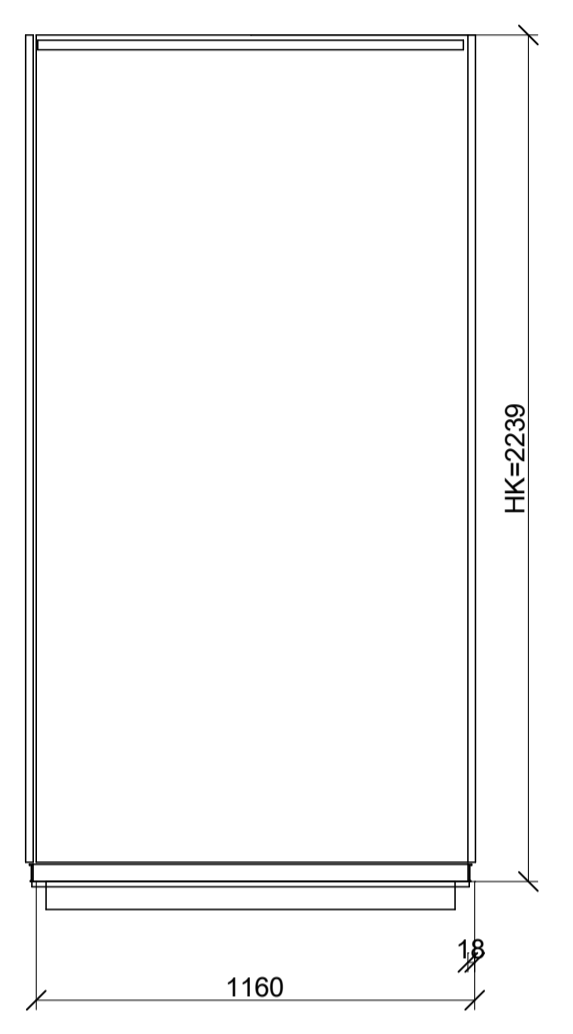
1 2 3 4 5 6 7 8



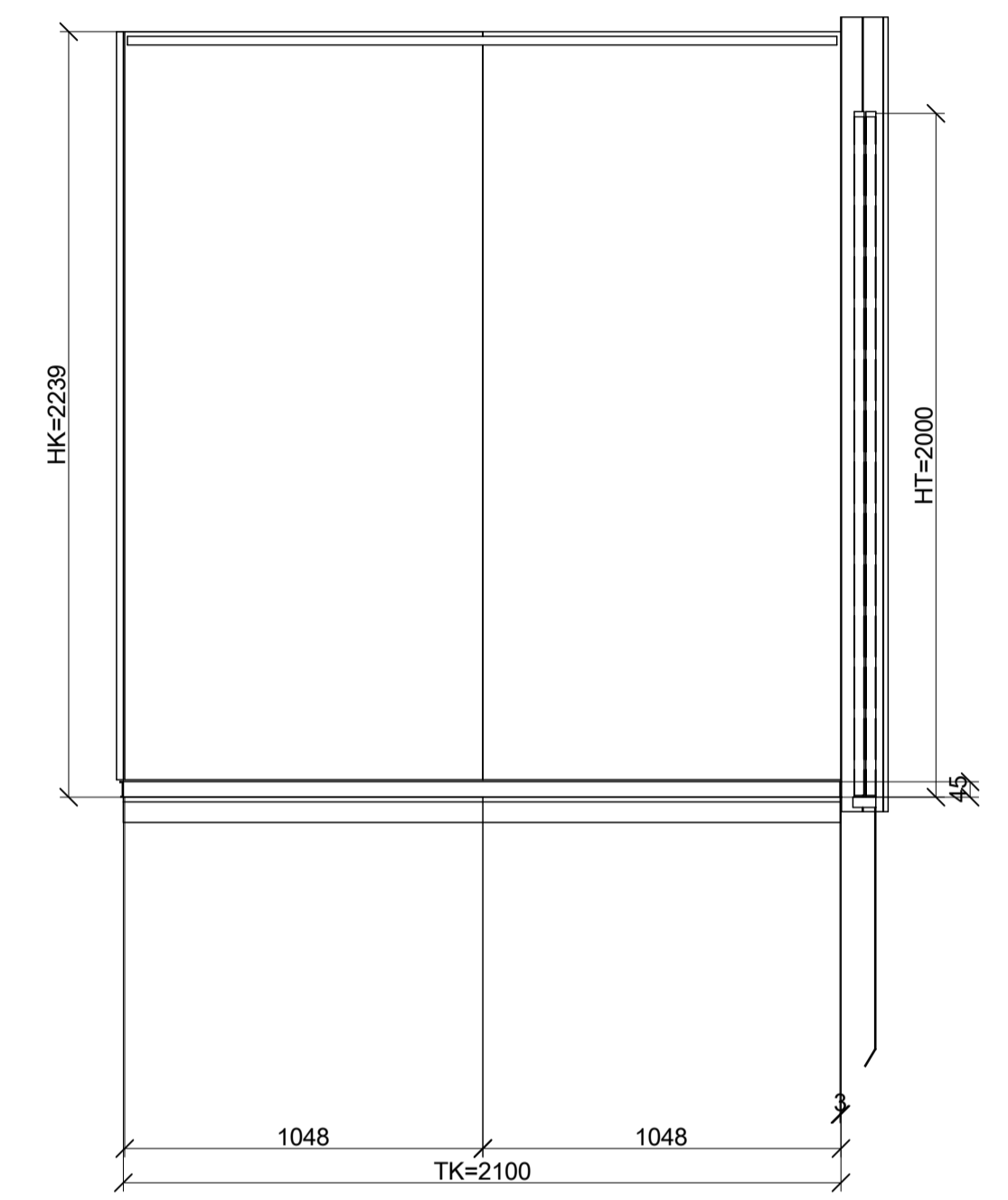
Left wall 1:20



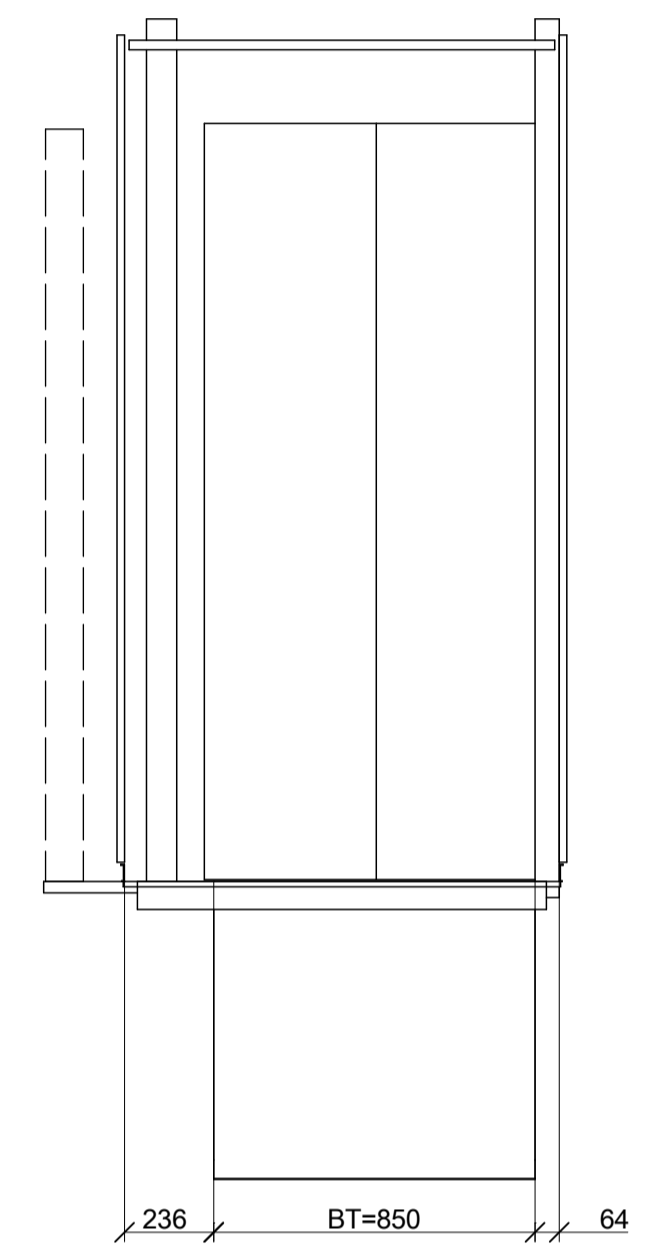
Rear wall 1:20



Right wall 1:20



Front wall 1:20



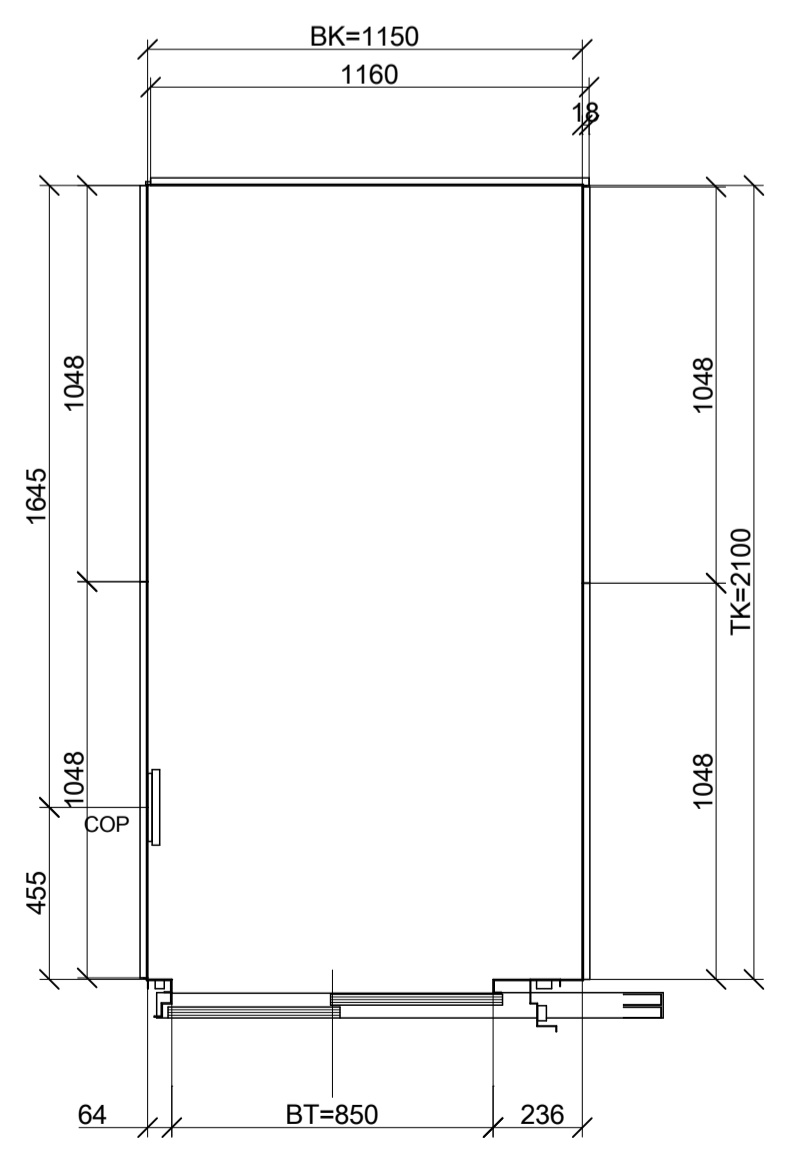
CAR DECORATION	
Car front finish	St steel AISI441 linen
Door finish	St steel AISI441 linen
Side walls material	Stainless st. cladded honeycomb
Side walls finish	St steel clad. AISI441 linen
Rear wall material	Stainless st. cladded honeycomb
Rear wall finish	St steel clad. AISI441 linen
Car skirting finish	Aluminum anodized gray
Car skirting alignment	Flush
Car skirting shape	Straight
Floor material	Bare steel
Floor finish	Bare steel
Car decoration line	Times Sq.
Ceiling type	Line
Ceiling decoration	St steel AISI441 brushed
Mirror left	Not ordered
Mirror rear	Not ordered
Mirror right	Not ordered
Rear wall glass type	Not ordered
Side wall glass type	Not ordered
Handrail finish	St steel AISI304 brushed
Handrail left	No
Handrail right	Straight S2 L.1050
Handrail rear	No
Bumper Rails Design	-
Bumper Rails Type	-
Weight of car decoration (GKD)	-
Weight of custom ceiling	-
Weight of custom ceiling	100
Weight of additional custom decoration	-
Weight of custom decoration	100

Tableau configuration	
COP type	FI GS 100
Mounting	Surface
2nd COP version	Not ordered

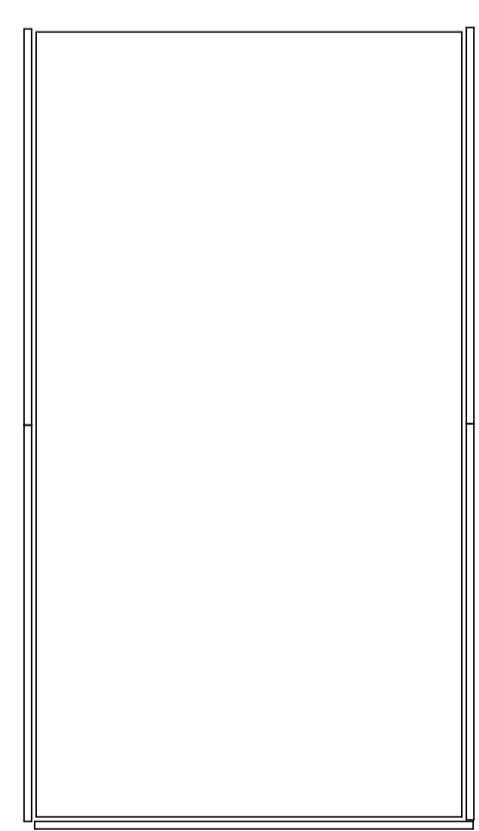
- BT= width door
- BK= width car
- COP= Car operation panel
- HT= height door
- HK= Car height
- HKC= side car height
- HKZ= height car flooring
- TK= depth car

Handrail position and handrail length should be calculated according to the R&D documentation

Plan view car 1:20



Ceiling 1:20



Approval - Mark

accord

accord after modification

Date \_\_\_\_\_ Name \_\_\_\_\_

**Car Layout** Product Line: **S3000+**

Building Address Client: **VSO Trnovska 4, zamenjava**  
- 1000 LJ  
OFFER Slovenia - - Ljubljana

Further inquiries concerning this plan on Tel: \_\_\_\_\_

Drawn: \_\_\_\_\_ 2022.08.02 Page 11/11

Released: \_\_\_\_\_ 2022.08.02

Comm. No. **0302565463**

Plan No. **030256546300099.100**

**Schindler** Contact: \_\_\_\_\_

This design and information is our intellectual property. It must neither be copied in any way nor used for manufacturing nor communicated to third parties without our written consent.

Diese Darstellung ist unser geistiges Eigentum. Sie darf ohne unsere schriftliche Zustimmung weder irgendwie kopiert noch zur Anfertigung des Werkes gebraucht oder Dritten Personen bekanntgegeben werden.

Cet ouvrage est notre propriété intellectuelle. Sans notre autorisation écrite, il ne peut être ni copié d'une manière quelconque ni être utilisé pour la fabrication, ni non plus être communiqué à des tiers.